

RAD Reaction Arms

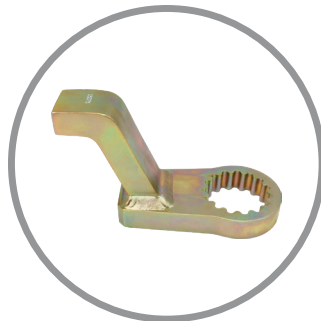
Reaction arms are essential for safe, accurate, and consistent torque application. Every RAD tool comes with a reaction arm included in the case. We offer eight main reaction arm styles to suit a wide range of applications. Visit our website to explore the full collection.

Need something unique? We also design custom reaction arms tailored to your specific requirements.

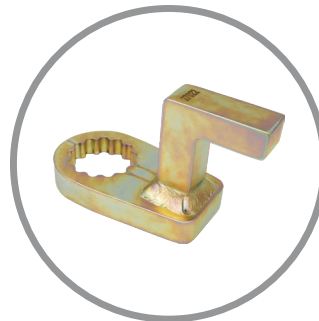
SCAN FOR MORE
INFORMATION



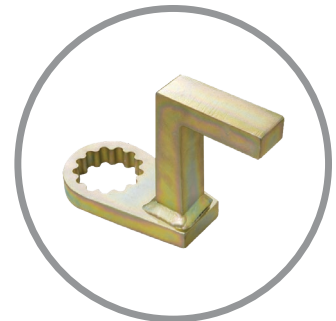
Angled Arm



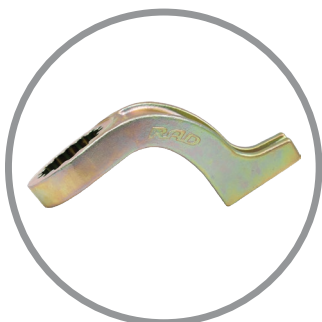
Deep
Angled Arm



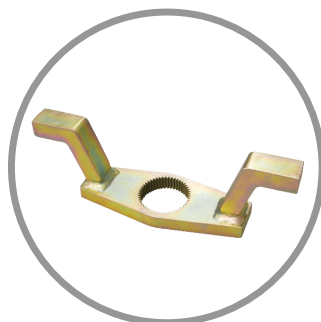
90 Degree Arm



Deep 90
Degree Arm



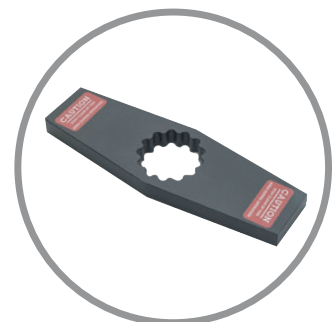
Cast Arm



Double
Ended Arm



Blank



Double
Ended Blank